

SYDNEY  
OVERLOOK AT HILLTOP



4 Beds | 3.5 Baths | 4,067 Sq. Ft.

770-502-6230 | [HeatherlandHomes.com](https://www.HeatherlandHomes.com)

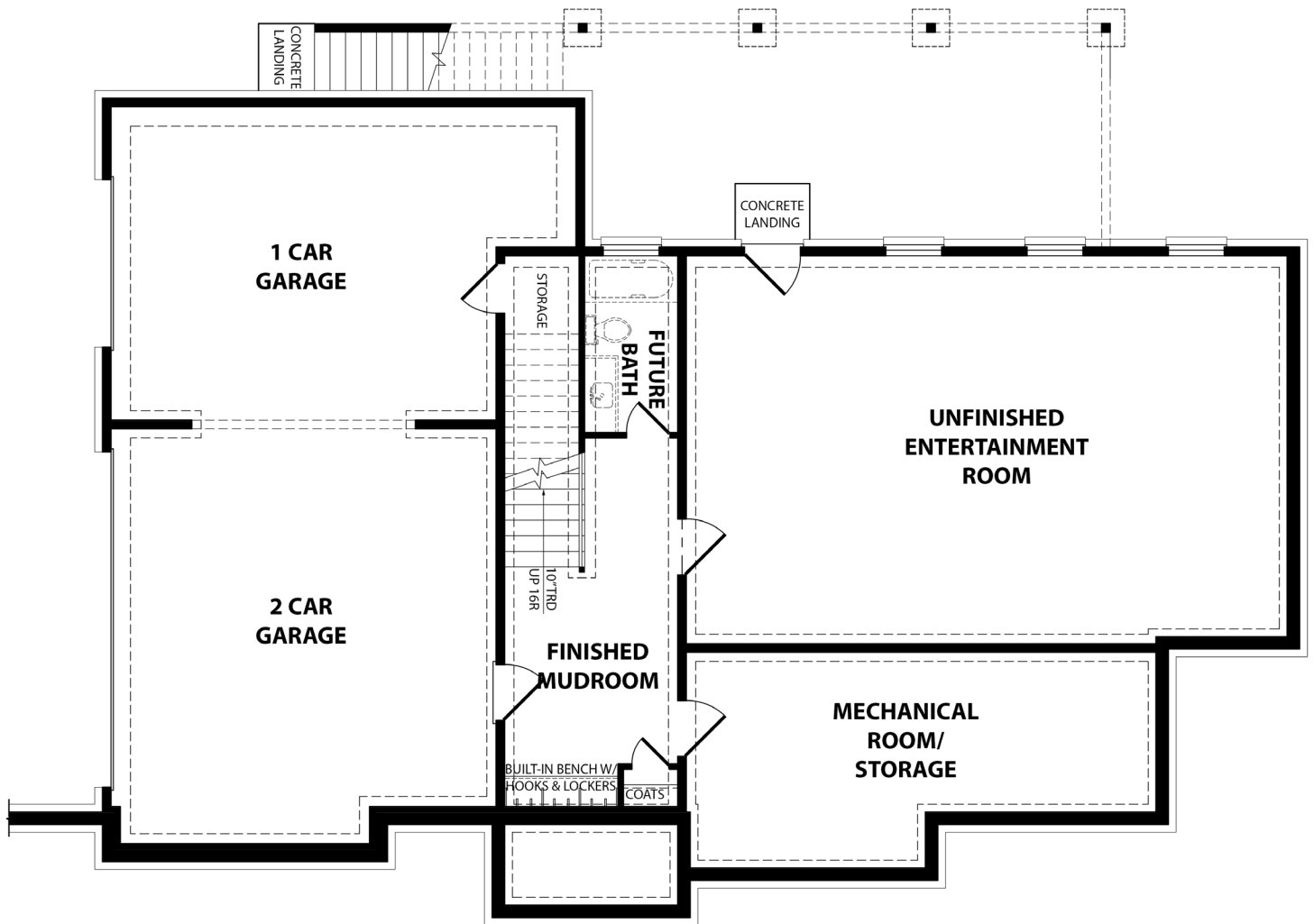


Prices, plans, elevations, square footage, specifications, materials, and included features are subject to change at any time without notice or obligation. Drawings, renderings, images, square footage, plans, elevations, features, colors and sizes are approximate and may vary from the actual homes built. © 2021 Tamra Wade Team of RE/MAX TRU (770) 502-6230. All rights reserved.

Revised 3-8-23

**RE/MAX** TRU  
— POWERED BY —  
**TAMRA WADE**

SYDNEY  
OVERLOOK AT HILLTOP



BASEMENT FLOOR

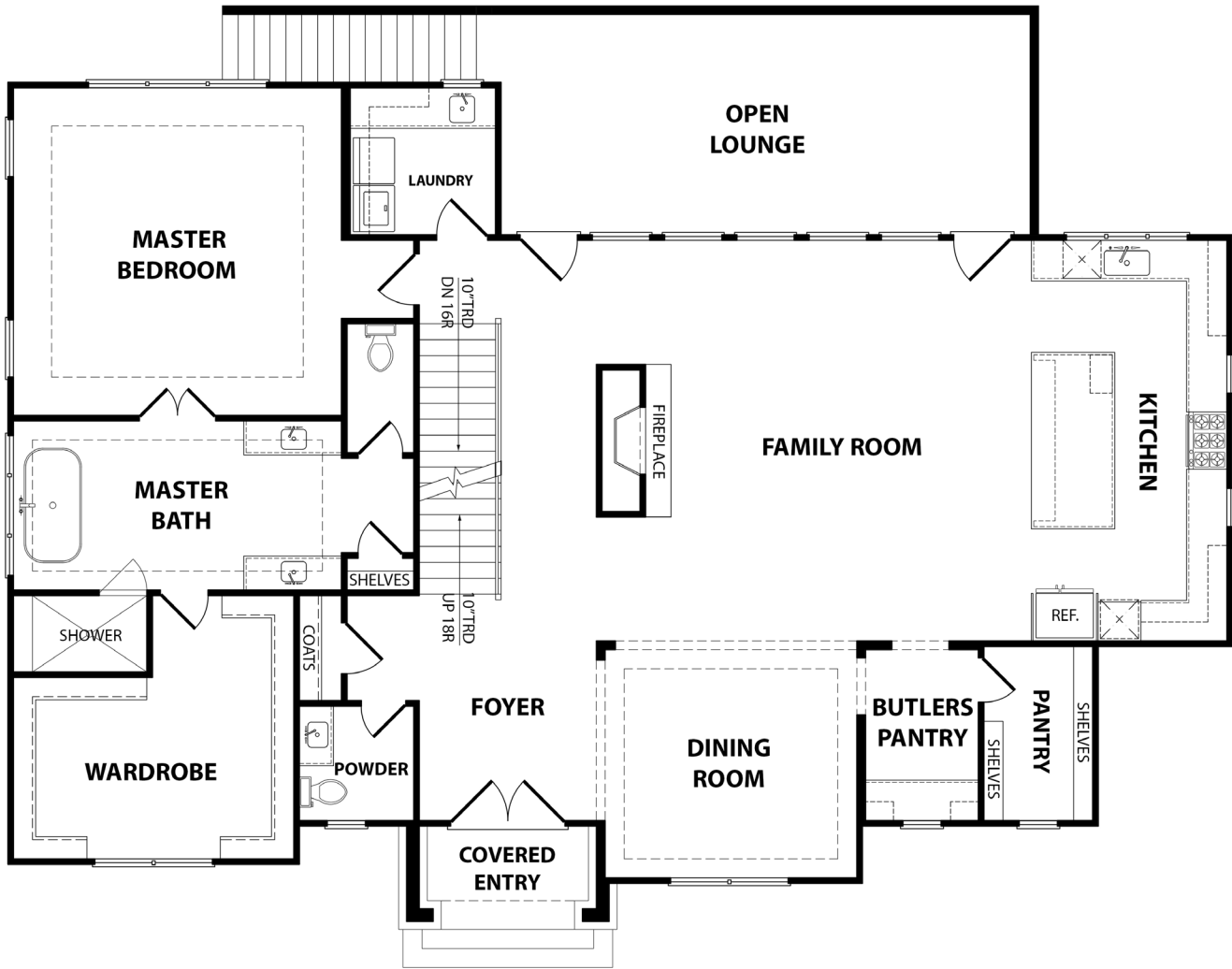
770-502-6230 | HeatherlandHomes.com



Prices, plans, elevations, square footage, specifications, materials, and included features are subject to change at any time without notice or obligation. Drawings, renderings, images, square footage, plans, elevations, features, colors and sizes are approximate and may vary from the actual homes built. © 2021 Tamra Wade Team of RE/MAX TRU (770) 502-6230. All rights reserved.

Revised 3-8-23

**SYDNEY**  
OVERLOOK AT HILLTOP



**FIRST FLOOR**

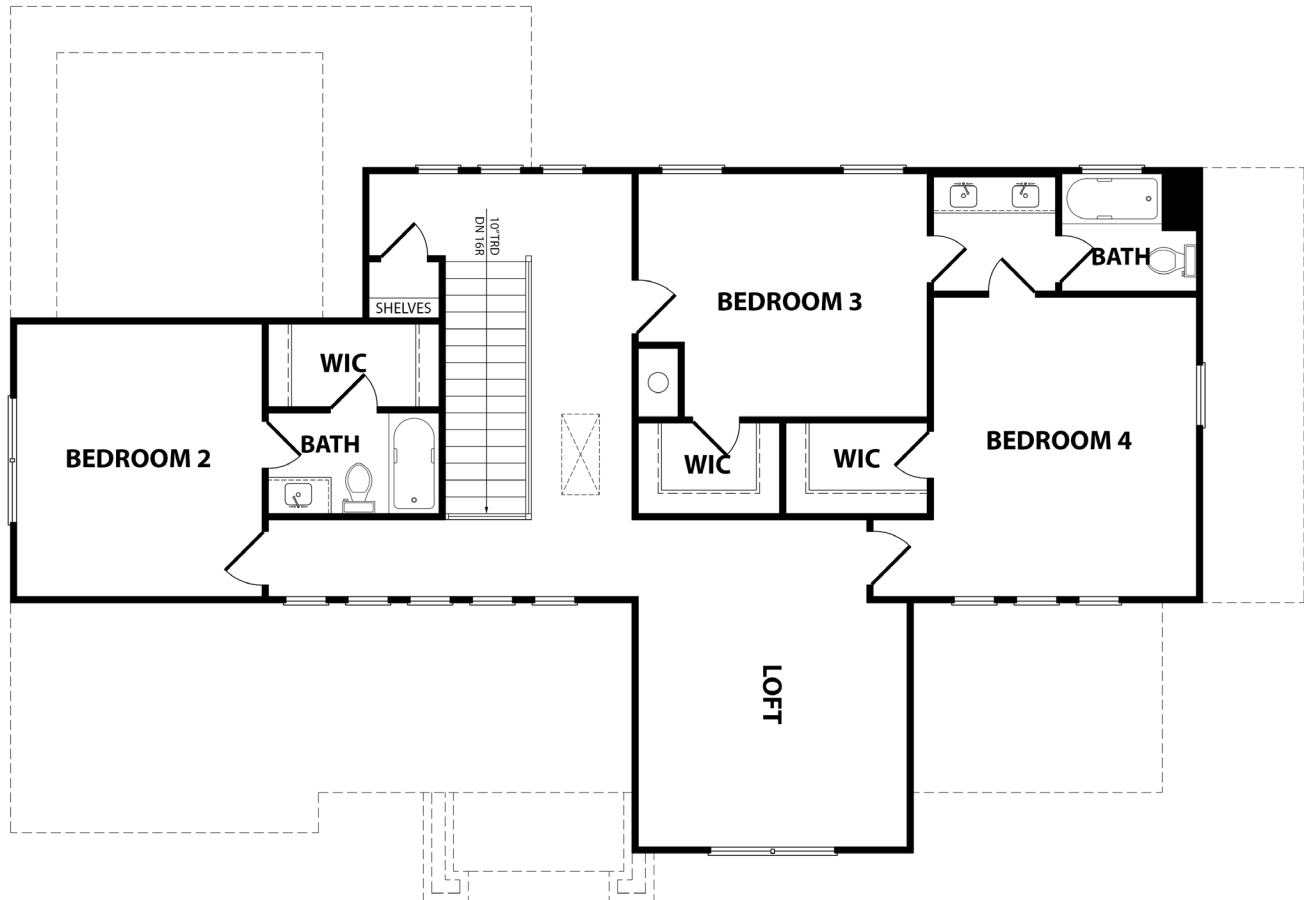
770-502-6230 | HeatherlandHomes.com



Prices, plans, elevations, square footage, specifications, materials, and included features are subject to change at any time without notice or obligation. Drawings, renderings, images, square footage, plans, elevations, features, colors and sizes are approximate and may vary from the actual homes built. © 2021 Tamra Wade Team of RE/MAX TRU (770) 502-6230. All rights reserved.

Revised 3-8-23

SYDNEY  
OVERLOOK AT HILLTOP



SECOND FLOOR

770-502-6230 | HeatherlandHomes.com



Prices, plans, elevations, square footage, specifications, materials, and included features are subject to change at any time without notice or obligation. Drawings, renderings, images, square footage, plans, elevations, features, colors and sizes are approximate and may vary from the actual homes built. © 2021 Tamra Wade Team of RE/MAX TRU (770) 502-6230. All rights reserved.

Revised 3-8-23