



4 BEDROOM
4.5 BATHROOM
3,034 SQ FT

Melissa

PROMENADE AT THE SQUARE | FLOORPLAN



Prices, plans, elevations, square footage, specifications, materials, and included features are subject to change at any time without notice or obligation. Drawings, renderings, images, square footage, plans, elevations, features, colors and sizes are approximate and may vary from the actual homes built. © 2019 Tamra Wade Team of RE/MAX TRU (770) 502-6232. All rights reserved.

Revised 9-4-19

RE/MAX TRU

TAMRA WADE
TEAM

Sales Center: 770.502.6230 | HeatherlandHomes.com



Melissa

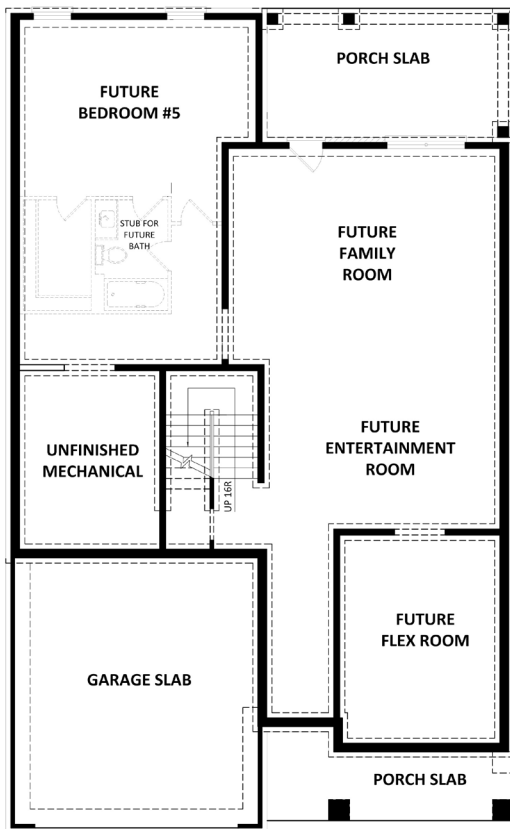
PROMENADE AT THE SQUARE | FLOORPLAN



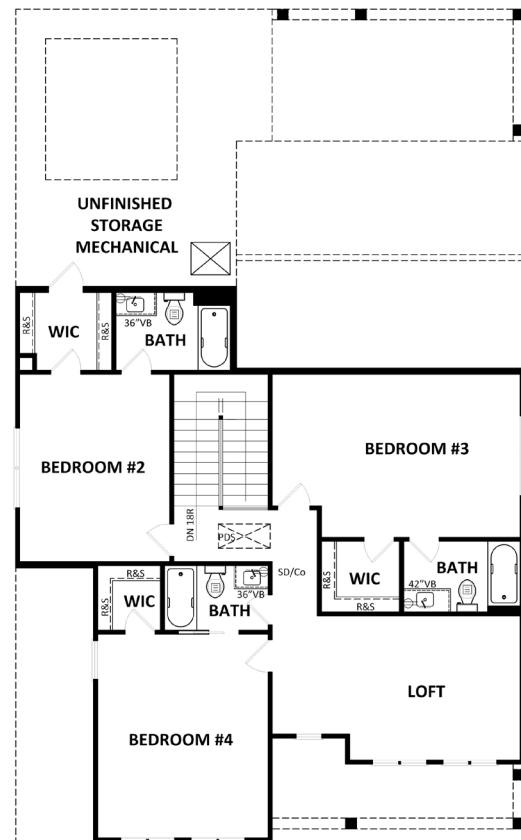
Elevation A



Elevation C



Opt. Basement Floor Plan



Second Floor Plan "C"

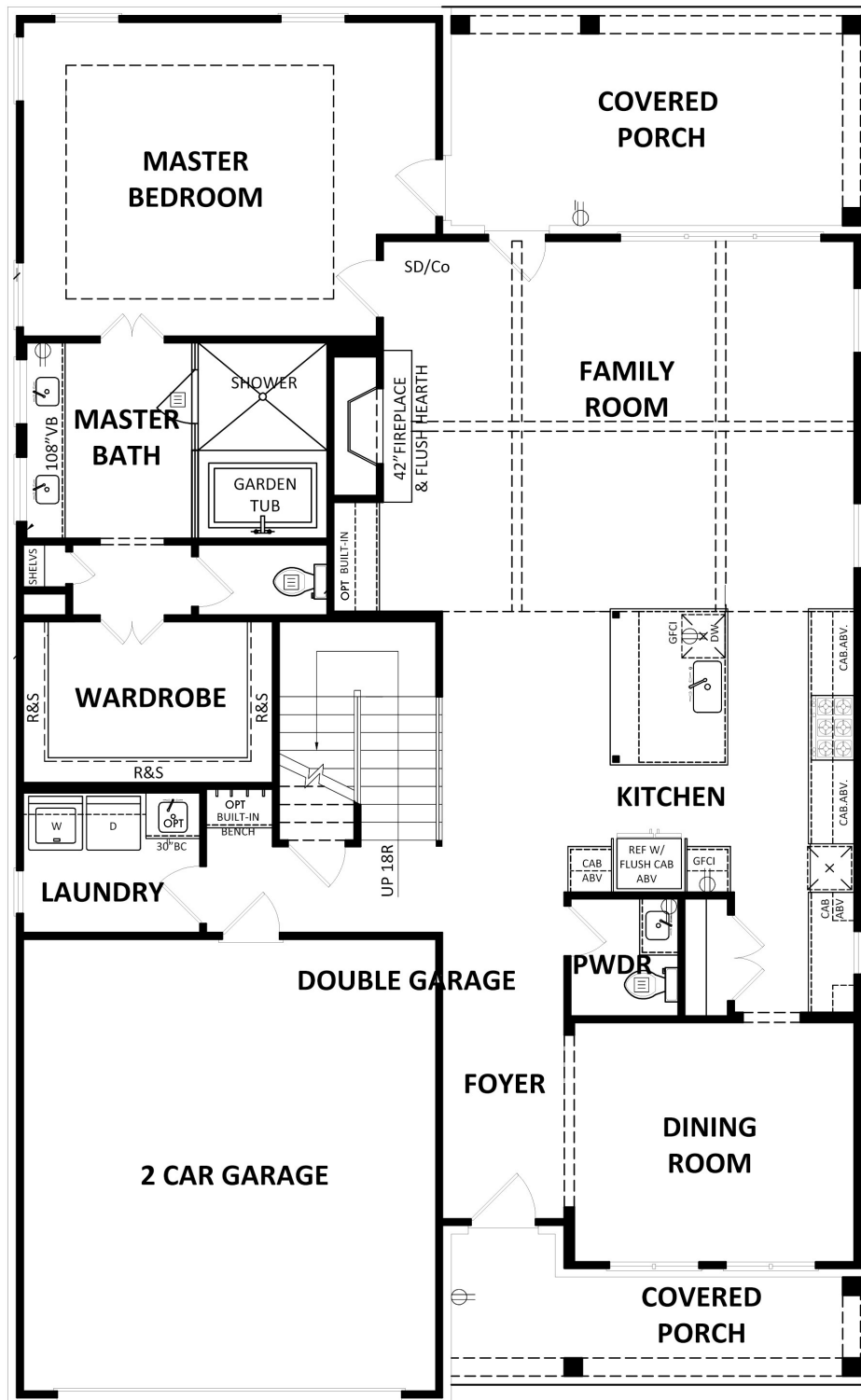


Prices, plans, elevations, square footage, specifications, materials, and included features are subject to change at any time without notice or obligation. Drawings, renderings, images, square footage, plans, elevations, features, colors and sizes are approximate and may vary from the actual homes built. © 2019 Tamra Wade Team of RE/MAX TRU (770) 502-6232. All rights reserved.



Revised 9-4-19

Sales Center: 770-502-6230 | HeatherlandHomes.com



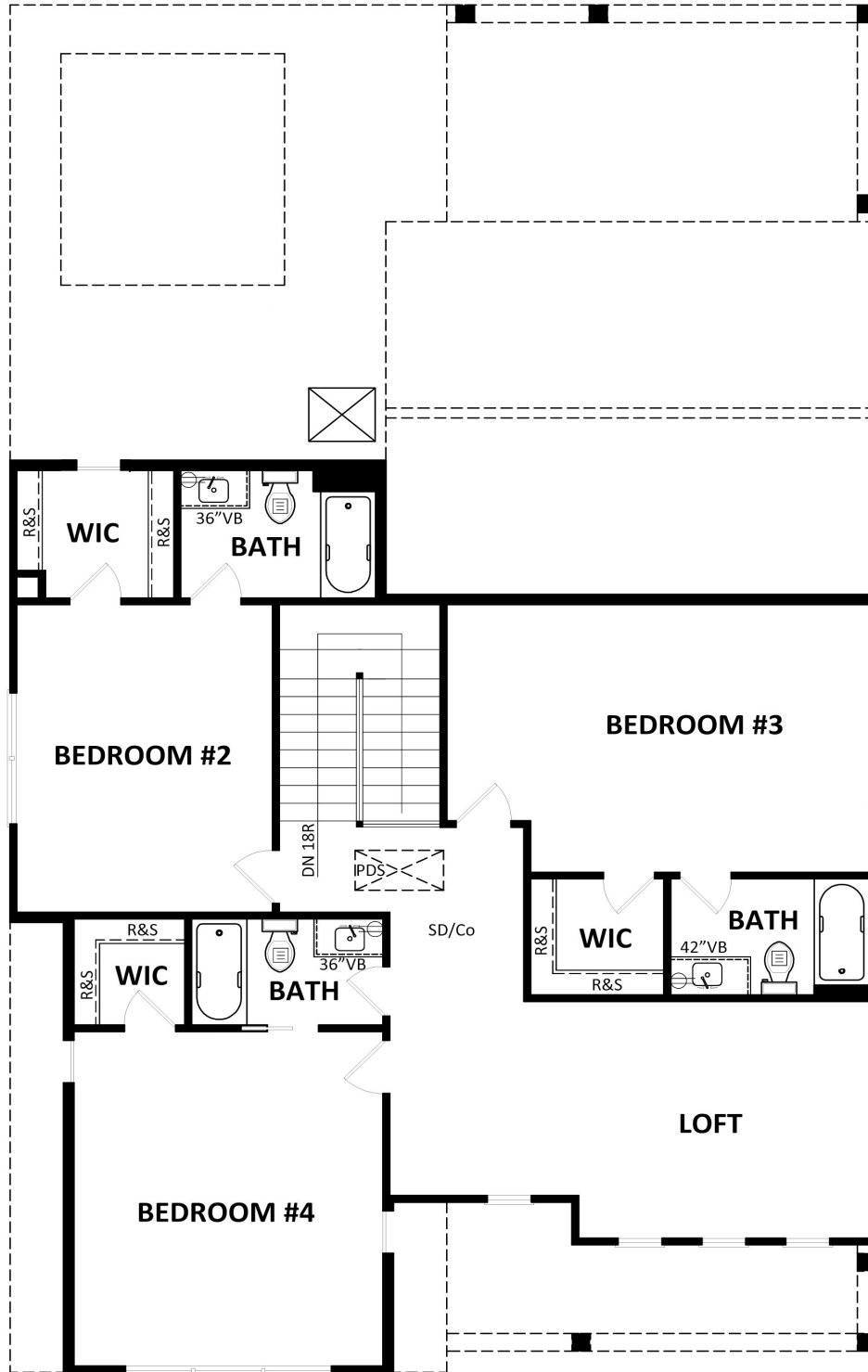
First Floor



Prices, plans, elevations, square footage, specifications, materials, and included features are subject to change at any time without notice or obligation. Drawings, renderings, images, square footage, plans, elevations, features, colors and sizes are approximate and may vary from the actual homes built. © 2019 Tamra Wade Team of RE/MAX TRU (770) 502-6232. All rights reserved.



Revised 9-4-19



Second Floor



Prices, plans, elevations, square footage, specifications, materials, and included features are subject to change at any time without notice or obligation. Drawings, renderings, images, square footage, plans, elevations, features, colors and sizes are approximate and may vary from the actual homes built. © 2019 Tamra Wade Team of RE/MAX TRU (770) 502-6232. All rights reserved.

RE/MAX TRU

TAMRA WADE
TEAM

Revised 9-4-19