

CARIE

PROMENADE RIDGE



SHOWN IN OPTIONAL
ELEVATION A

3 Beds
3.5 Baths
2,941 Sq. Ft.



ELEVATION B



ELEVATION C

770-502-6230 | HeatherlandHomes.com



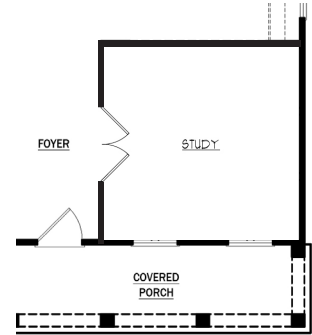
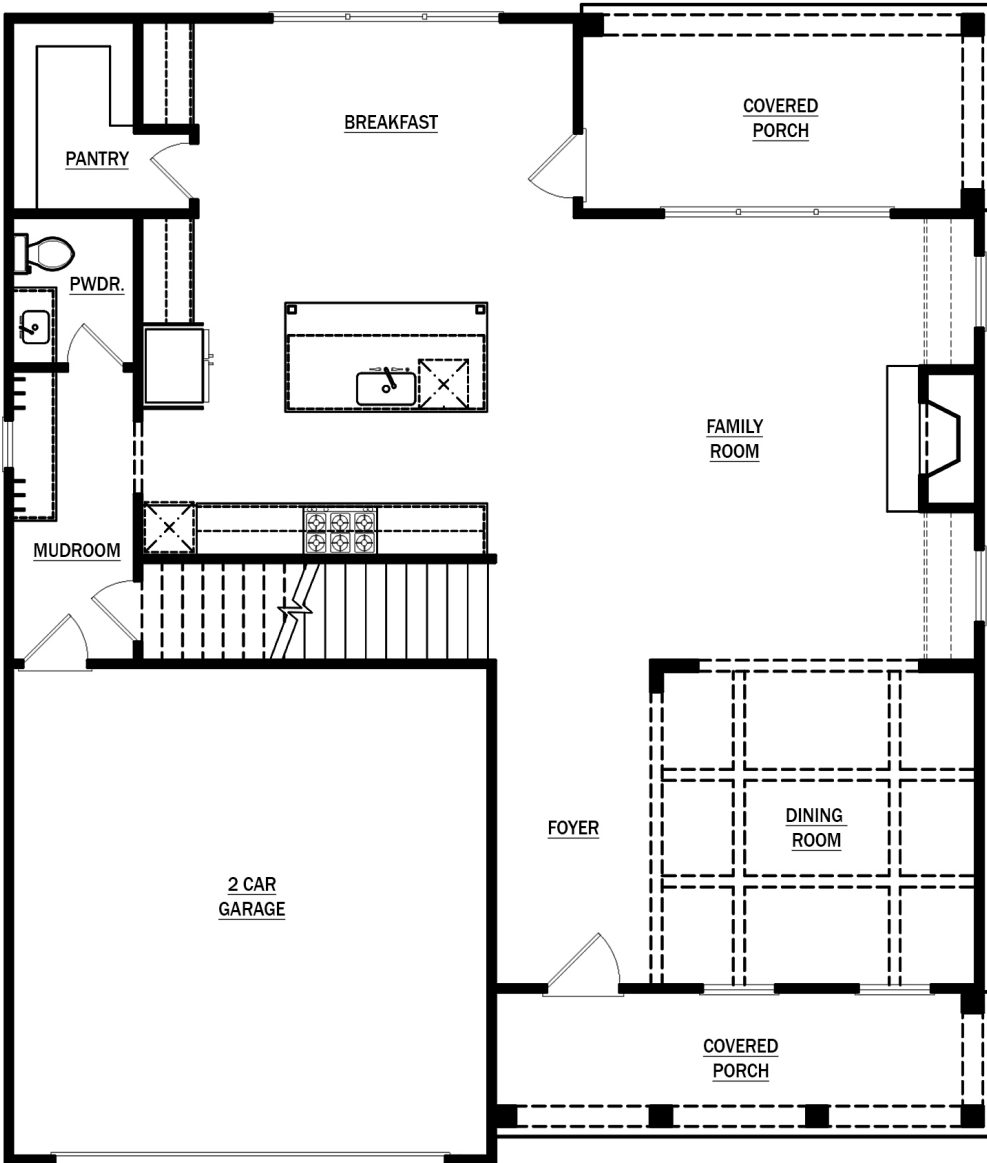
Prices, plans, elevations, square footage, specifications, materials, and included features are subject to change at any time without notice or obligation. Drawings, renderings, images, square footage, plans, elevations, features, colors and sizes are approximate and may vary from the actual homes built. © 2021 Tamra Wade Team of RE/MAX TRU (770) 502-6230. All rights reserved.

Revised 7-5-22

RE/MAX TRU
— POWERED BY —
TAMRA WADE

CARIE

PROMENADE RIDGE



Opt. First Floor with Study

FIRST FLOOR

770-502-6230 | HeatherlandHomes.com

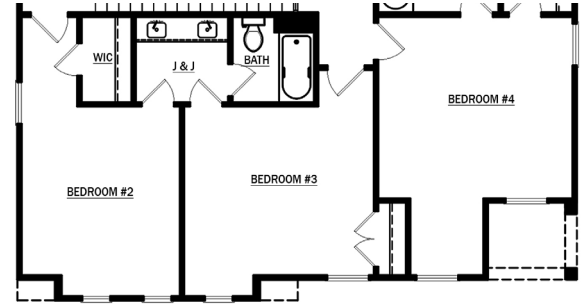
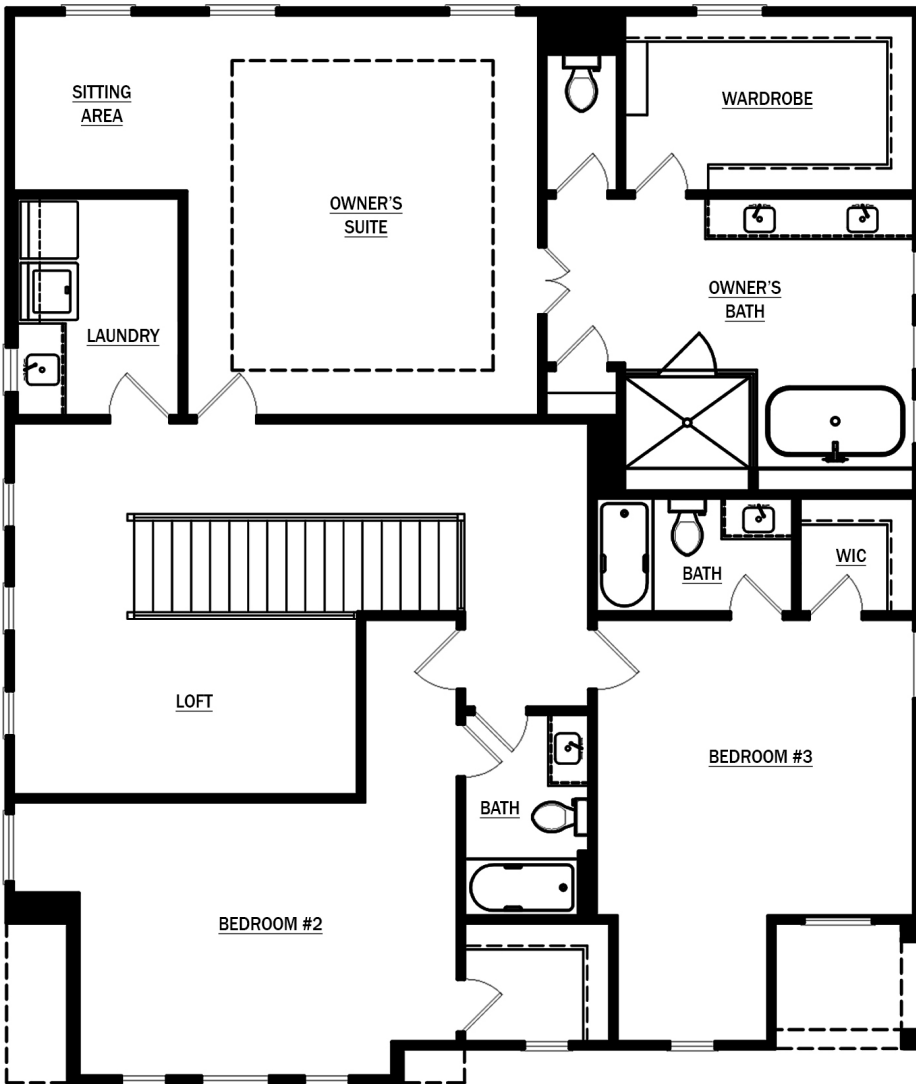


Prices, plans, elevations, square footage, specifications, materials, and included features are subject to change at any time without notice or obligation. Drawings, renderings, images, square footage, plans, elevations, features, colors and sizes are approximate and may vary from the actual homes built. © 2021 Tamra Wade Team of RE/MAX TRU (770) 502-6230. All rights reserved.

Revised 7-5-22

CARIE

PROMENADE RIDGE



Opt. Second Floor
with 4th Bedroom

SECOND FLOOR

770-502-6230 | HeatherlandHomes.com



Prices, plans, elevations, square footage, specifications, materials, and included features are subject to change at any time without notice or obligation. Drawings, renderings, images, square footage, plans, elevations, features, colors and sizes are approximate and may vary from the actual homes built. © 2021 Tamra Wade Team of RE/MAX TRU (770) 502-6230. All rights reserved.

Revised 7-5-22